



Since 1883

Flaking Mills

ROSKAMP SERIES



• STRONG •

• FLEXIBLE •

• CONSISTENT FLAKES •

• USER FRIENDLY •

• HIGH CAPACITY •

• RELIABLE •

Robust THE CPM ADVANTAGE

The CPM ROSKAMP Flaking Mill has established a strong market position as a machine for the production of crimped or steamed feed flakes with an extraordinarily good structure. The rugged construction guarantees **maximum performance** around the clock.

■ HIGH PERFORMANCES ■ LOW COST MAINTENANCE ■ MAXIMUM SAFETY



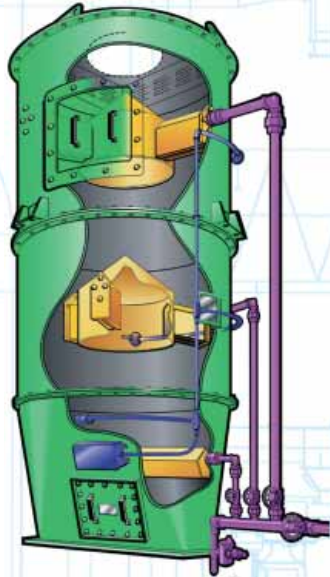
Since 1883

Your partner

CPM ROSKAMP FLAKING MILLS

For consistent flakes

The CPM/ROSKAMP Flaking Mill has established a strong market position as a machine for the production of cereal flakes with very consistent structure. The CPM/ROSKAMP Roller Mill series feature a heavy duty design and are available with rollers with diameters from 12" up to 32" and different lengths. The roller pair is driven at one side by one electrical motor and high efficiency belt, while at the other side a speed difference between the rollers is created by V-belt reduction.



The CPM Roskamp Flaking mill is designed for the most demanding cold and warm flaking operations. Roll corrugations and roll speed differential ratios are available to match any operating conditions. Unique bearing slides assure accurate, consistent production. All machine functions adapt easily to full-automation. The rugged construction guarantees maximum performance around the clock.

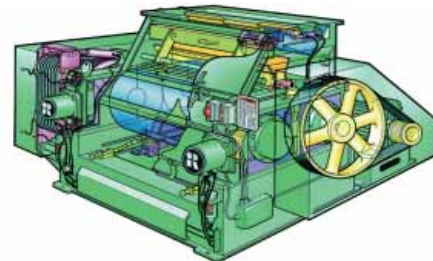
STEAM CHAMBER

For steam flaking applications CPM-Roskamp introduced vertical round expanding design steam chambers. The steam chambers are available in different diameters from 45" up to 90" and heights from 10' up to 50' in 5' height extension increments. The full stainless steel construction has smooth, obstruction free interior with sight glasses. The multi level steaming ports allows for precise control of steam addition and the turned cone design resist plugging. The chamber is executed with clean out doors to provide access for cleaning, inspection and service.

FEATURES

ROLLS & SHAFTS

Rolls are of the highest-quality straight carbon clear chill cast iron. All rolls are cast, machined, and ground to the best technical specifications. Allows custom corrugating for specific product configurations. Large diameter shafts are high tensile, high yield alloy steel. Roll face and shafts are cylindrically ground to assure concentricity.



ORT ROLLS

For steam flaking applications CPM-ROSKAMP offers ORT rolls. These rolls have an indefinite chill with equal material characteristics throughout the roll. This means that the whole roll has basically the same hardness. Because there is no material structure difference together with the increased toughness, this type of roll is much more resistant against "spalling". Also because of the indefinite chill there is no limit on the surface depth and can the rolls wear out much deeper.



Crimped Barley



Maize



Barley



Crimped Oats

in productivity

BEARINGS

Roll shaft bearings are self-aligning spherical roller bearings. Tapered bearing bore with adapter sleeve provides positive locking fit with shaft to prevent shaft fretting. All bearing lube ports are easily accessible for maintenance.

BEARING HOUSINGS & SLIDE BLOCK

Bearing housings and slide block assure positive roll tram (maintain rolls in same horizontal plane for positive particle size control and assures best roll life). External tension and pressure members contain roll separating forces and maintain parallel and tram.

ROLL ADJUSTMENT

Roll adjustment is made by machine screw jacks. It provides accurate, repeatable gap adjustment and assures parallelism of rolls. Air motors provide rapid roll adjustments. Manual hand wheel is standard for fine control. Optional full feature design provides remote roll adjust with digital read out. Remote roll stop offers maximum protection.



HYDRAULIC ADJUSTMENT

Hydraulic roll adjustment is offered for the larger models. Double acting 8" (200 mm) diameter cylinders act directly through the centreline of the bearings. Hydraulic controls are provided by a circuit block with directional controls, (reducing) valves gauges, accumulator and filter. Adjustable roll stops prevent direct contact between the rolls.

MAIN DRIVE & MOTOR BASE

The main drive (motor to rolls) is a high efficiency Belt design. The motor base is modular to accept standard motor frames. The rigid Roll Housing is precision fabricated for maximum strength. Machined slide block ways assure roll parallelism and tram. Each housing is of dust tight construction with sample ports. Roll end seals are externally adjusted.

OPTIONS

ROLL FEEDER

The roll feeder features a steeply angled housing for cleanliness. Feed roll is corrugated to fit products processed. Roll Feeder with Adjustable Gate Jack screw arrangement provides a simple means of adjusting the feed gate position. Independent drive and positive gate action easily adapt to full automation control.



Side view FX1600

PIN FEEDER

For steam flaking applications the flaker is equipped with pin-feeder and feed-gate for feeding the machine. The active feeding of the pin-feeder in combination with the feed-gate design creates a feed system less sensitive for blockages, and therewith reduces the risk of possible "hot spots" at the roll which can cause roll damage.



Roll Adjustment

VIBRATORY FEEDER

Optional Vibratory Feeder controls feed rate and distribution across the roll length. Vibratory feeders are recommended for hard to feed materials with poor flow characteristics.



Inter Roll Drive

INFINITE GAP CONTROL WITH DIGITAL READ OUT

Optional full feature units are fit with optical encoders, provide a digital read out of the roll position. Rolls can be remotely opened and closed, and different grinds selected with the turn of a switch.



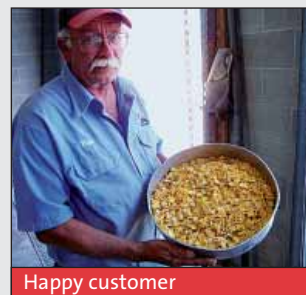
Feeder Drive

MAGNET

For cold flaking Heavy Duty permanent magnets pick tramp iron from the product stream. Magnets swing out of the feeder housing for ease of cleaning.



Front view SP3200



Happy customer



Since 1883

Flaking Mills

CPM ROSKAMP SERIES

CPM Roskamp Flaking mills are made in a wide variety of sizes. For special applications additional models are available.

Mill Size	KW	Flake thickness	Density kg/l	0,5 mm	1 mm	1,5 mm 0,28-0,31	2 mm 0,335	2,5 mm 0,360	3 mm 0,412
16 x 30	30	Retention time-minutes		50-60	45-55	40-50	35-45		
		Barley		1,4 1,8	1,8 2,3	2,7 3,6	4,5 5,4	NA	NA
		Retention time-minutes		60+	50-60	50-60	50-60	50-60	50-60
16 x 36	40	Retention time-minutes		50-60	45-55	40-50	35-45		
		Barley		1,6 2,2	2,3 2,7	3,2 4,1	5,4 6,4	NA	NA
		Retention time-minutes		60+	50-60	50-60	50-60	50-60	50-60
16 x 36	45	Retention time-minutes		50-60	45-55	40-50	35-45		
		Barley		2,3 2,7	3,2 3,6	5,4 6,4	7,3 9,1	NA	NA
		Retention time-minutes		60+	50-60	50-60	50-60	50-60	50-60
20 x 40	55	Retention time-minutes		50-60	45-55	40-50	35-45		
		Barley		2,7 3,6	3,6 4,5	6,8 7,7	9,5 11,3	NA	NA
		Retention time-minutes		60+	50-60	50-60	50-60	50-60	50-60
24 x 42	75	Retention time-minutes		50-60	45-55	40-50	35-45		
		Barley		3,6 4,5	5,0 5,9	9,1 10,0	12,7 14,5	NA	NA
		Retention time-minutes		60+	50-60	50-60	50-60	50-60	50-60
24 x 48	75	Retention time-minutes		50-60	45-55	40-50	35-45		
		Barley		4,1 5,0	5,4 6,4	10,0 10,9	14,5 16,3	NA	NA
		Retention time-minutes		60+	50-60	50-60	50-60	50-60	50-60
28 x 52	90	Retention time-minutes		50-60	45-55	40-50	35-45		
		Barley		5,4 6,4	7,3 8,2	12,7 14,5	26,3 20,9	NA	NA
		Retention time-minutes		60+	50-60	50-60	50-60	50-60	50-60
28 x 62	110	Retention time-minutes		50-60	45-55	40-50	35-45		
		Barley		6,4 7,3	9,1 10,0	16,3 18,1	22,7 27,2	NA	NA
		Retention time-minutes		60+	50-60	50-60	50-60	50-60	50-60
32 x 72	132	Retention time-minutes		50-60	45-55	40-50	35-45		
		Barley		9,1 10,9	12,7 14,5	22,7 25,4	31,8 34,5	NA	NA
		Retention time-minutes		60+	50-60	50-60	50-60	50-60	50-60
32 x 78	160	Retention time-minutes		50-60	45-55	40-50	35-45		
		Barley		10,0 10,9	13,6 14,5	24,5 27,2	32,7 36,3	NA	NA
		Retention time-minutes		60+	50-60	50-60	50-60	50-60	50-60
32 x 84	160	Retention time-minutes		50-60	45-55	40-50	35-45		
		Barley		10,9 11,8	14,5 15,4	26,3 29,0	34,5 38,1	NA	NA
		Retention time-minutes		60+	50-60	50-60	50-60	50-60	50-60
				9,1 10,9	14,5 16,3	22,7 25,4	29,9 31,8	36,3 45,4	45,4 49,9

WORLD-WIDE

CPM offers service through a world wide network of local agents in nearly every country. They get supported directly from the regional headquarters by teams of pelleting technology specialists.

SALES DEPARTMENTS

Our establishments are staffed with qualified sales, engineering and service personnel and are well stocked with dies, parts and accessories. This ensures prompt efficient processing of all customer service requirements.

CONTACT

Please feel free to contact your local agent, our offices or our Internet sites www.cpmeurope.nl or www.cpmroskamp.com.



CPM/Europe BV
Distelweg 89
1031 HD Amsterdam
The Netherlands
+31 20 494 61 11 Phone
+31 20 636 42 94 Fax
info@cpmeurope.nl

Roskamp Champion
2975 Airline Circle
Waterloo, IA 50703 - USA
+1 319 232-8444 Phone
+1 319 236-0481 Fax
800 366-2563
sales@cpmroskamp.com

California Pellet Mill Co.
1114 E. Wabash Avenue
Crawfordsville, IN 47933-USA
+1 765 362-2600 Phone
+1 765 362-7551 Fax
800 428-0846
sales@cpmroskamp.com

CPM/Pacific Private Ltd.
21, Gul Drive
Singapore 629470
Republic of Singapore
+65 6 265 07 01 Phone
+65 6 268 64 28 Fax
cus.svc@cpmasia.com